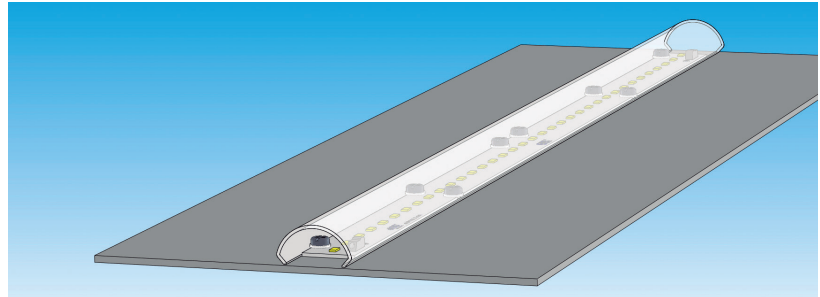
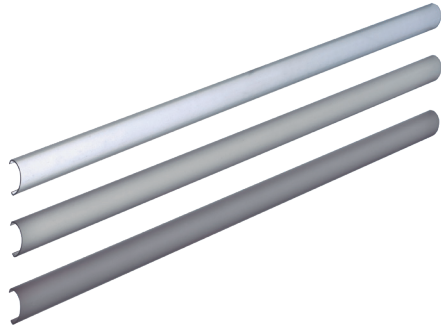


# eDIF LINE 40mm

Diffusers for 40mm - wide eLED LINE modules  
Difusores para módulos eLED LINE de ancho 40mm



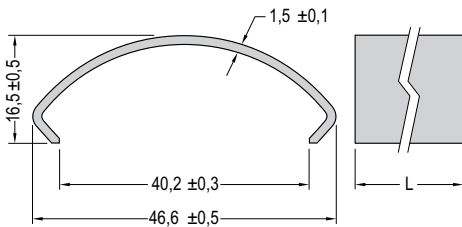
## Opacity / Opacidad



Transparent  
Transparente

Semitransparent  
Semitransparente

Opal  
Difuso



Diffusers for 40mm - wide eLED LINE modules.  
High Luminous Transmission.  
Tolerances eDIF length:  $\pm 1\%$ .  
Fast snap on mounting with M4 insulation ring.  
(Ref. No. 9710107 DIN-125 M4 x  $\phi 4,30$  x  $\phi 9$  x 0,80 6.6PA).

Difusores para módulos eLED LINE de ancho 40mm.  
Elevada Transmisión Lumínica.  
Tolerancia Longitud eDIF:  $\pm 1\%$ .  
Sencillo montaje a presión fijado con arandelas de plástico M4.  
(Ref. No. 9710107 DIN-125 M4 x  $\phi 4,30$  x  $\phi 9$  x 0,80 6.6PA).

Additional information at [www.elt.es/en](http://www.elt.es/en)

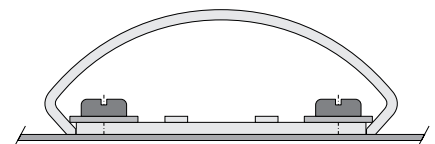
Más información en [www.elt.es](http://www.elt.es)

## Technical characteristics / Características técnicas

|                         | Ref. No. | Lenght<br>Longitud<br>L<br>mm | Opacity<br>Opacidad                | Efficacy<br>Eficiencia<br>% |
|-------------------------|----------|-------------------------------|------------------------------------|-----------------------------|
| eDIF 2-2000-TRANSPARENT | 9953007  | 2000                          | Transparent / Transparente         | 93                          |
| eDIF 2-2000-FROSTED     | 9953008  | 2000                          | Semitransparent / Semitransparente | 88                          |
| eDIF 2-2000-OPAL        | 9953009  | 2000                          | Opal / Difuso                      | 81                          |



Logistical data  
Datos logísticos  
[www.elt.es](http://www.elt.es)



Diffuser fixing with M4 insulation ring  
Fijación del difusor mediante arandela de plástico M4  
( Ref. 9710107 DIN-125 M4 x  $\phi 4,30$  x  $\phi 9$  x 0,80 6.6PA )