



U^{elt}
pulse

elt

MOBILE APP
TO CONTROL
INDOOR LIGHTING

OPTIMISED FOR
SMARTPHONE
& TABLET



EASY TO INSTALL AND START UP



FLEXIBLE AND SCALABLE SOLUTION



VISUAL AND INTUITIVE INTERFACE



BLE WITH POSSIBILITY OF FORMING
PART OF A MESH NETWORK



MAXIMUM SECURITY
VIA ENCRYPTION AND
PASSWORD



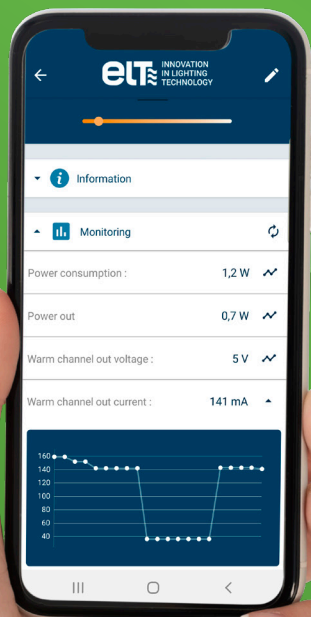
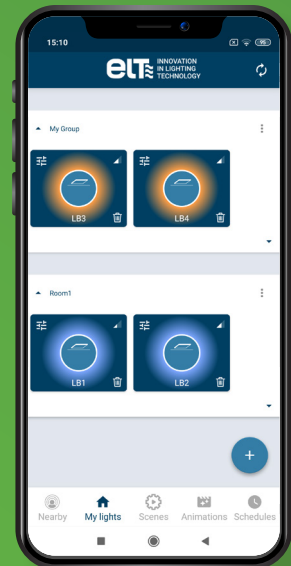
U elT pulse

It's a **mobile app** with built-in Bluetooth Low Energy (BLE) technology which, combined with the range of **indoor drivers** with BLE technology from **ELT**, is able to **control, configure** and **manage** the **lighting** to adapt it to the optimal lighting needs of every moment and any specific place.

INDIVIDUAL OR GROUP CONTROL OF THE LIGHTING FIXTURES

The app is able to **turn on and off, regulate and change** the temperature colour of each lighting fixture or group of luminaires with one touch of the screen, remotely and instantly, with no need for cables.

The lighting can also be controlled via **voice commands**.



REAL TIME MONITORING

Upulse offers **real time consultation and monitoring** of the primary variables relating to lighting and energy consumption, including the voltage, current, power output, the status of the power grid and its RMS value as well as the driver temperature.

SUITABLE FOR DIFFERENT APPLICATIONS

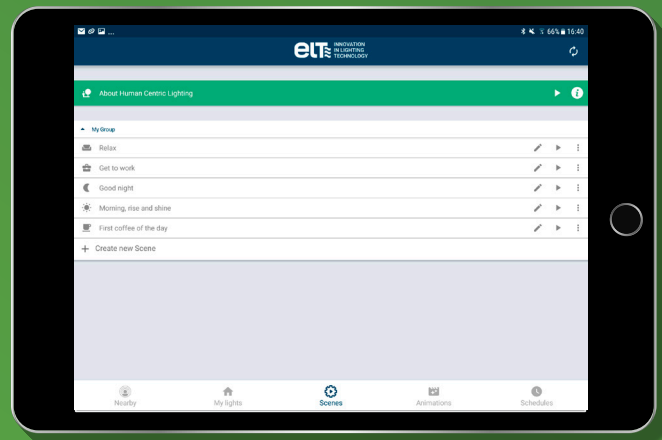


CREATING AND PROGRAMMING SETTINGS AND ANIMATIONS

Multiple settings and **animations** can be created that combine different dimming and temperature values, so that they work **independently**.

By setting up a calendar, it is possible to **program** the required settings and animations to **launch automatically**, configuring them by day of the week or time, or for a specific date.

These functionalities are possible by combining this tool with the BLE devices from the ELT portfolio.



DUAL FUNCTIONALITY

The distinctive features of Upulse integrate beacon functionality with the **iBeacon (Apple)** and **Eddystone (Google)** standards, enabling monitoring services for people and devices for different fields of application.

The tool can also be integrated with **augmented reality applications** to provide an enhanced user experience through broader information on the environments with which it is interacting.



EASY SET-UP & INSTALLATION

The software is able to **alternate** between the cold and warm channels with **no need** for **manual intervention**.





& HUMAN CENTRIC LIGHTING



HCL provides an optimal level of light and helps create a space that closely resembles a natural light environment.

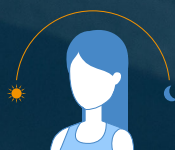
The Upulse solution has been designed to quickly and easily **adjust artificial light** to the personal and/or professional needs of the individual to maximise their quality of life.

The construction of a space adapted to Human Centric Lighting is possible thanks to Upulse, through which, via its light **colour** and **intensity** control with the **configuration of settings** and **animations**, artificial lighting can be controlled so that it adapts to **human circadian rhythms**.

BENEFITS



Visual comfort



Health and well-being



Energy efficiency



Pol. Ind. Malpica - Calle E nº 11
50016 Zaragoza (Spain)
Tel. +34 976 573 660



www.elc.es

elt

INNOVATION
IN LIGHTING
TECHNOLOGY